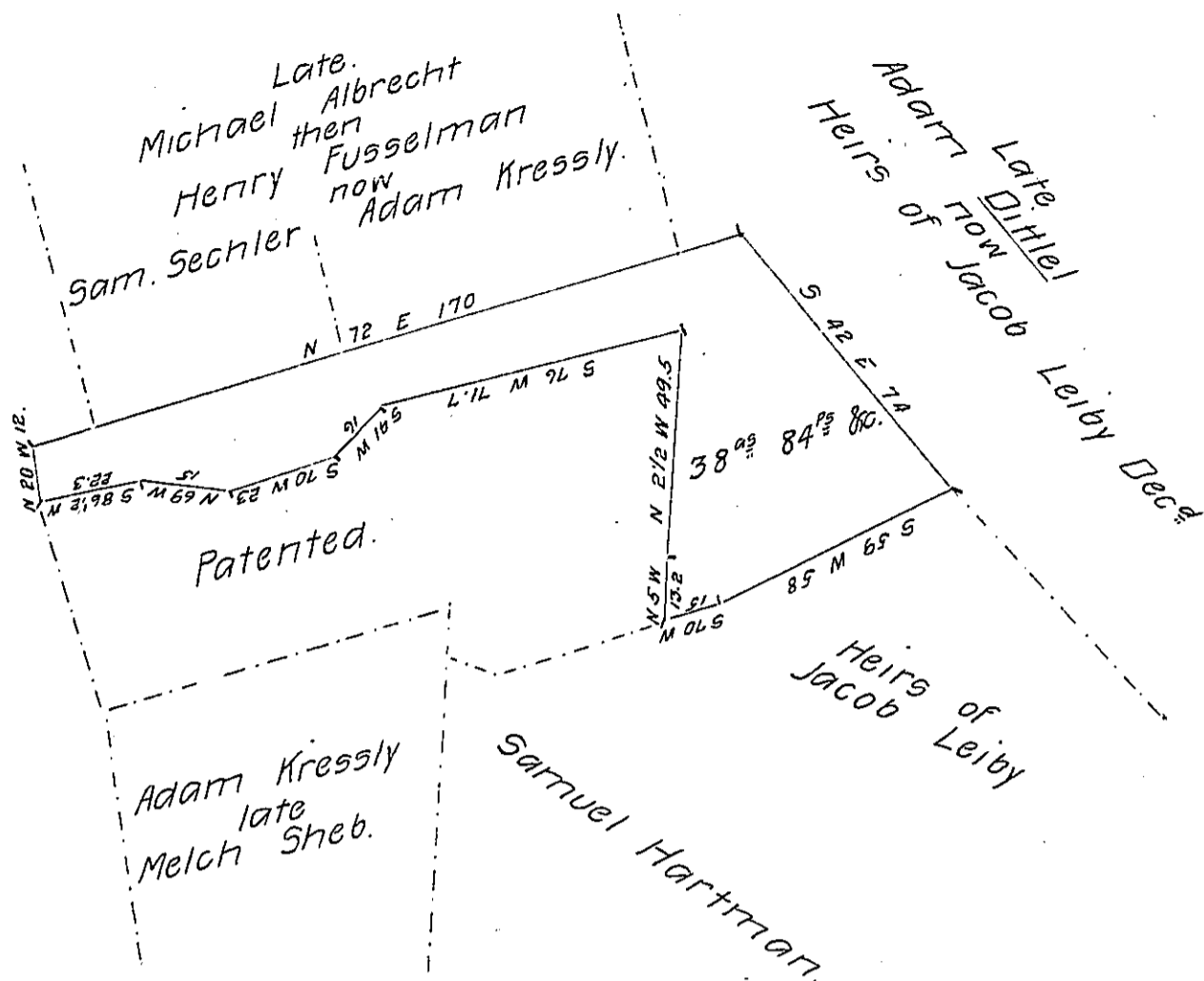


Late  
Martin Donat  
now  
Jeremiah Fusselman.



Draft of a tract of land, situated in Lynn town-  
 ship, Lehigh County, Containing  $38^{\text{as}}$   $84^{\text{ps}}$  & Allowance  
 of six per cent for Roads &c. Surveyed for Adam Kressly  
 the 3<sup>rd</sup> day of Aug. A. D. 1871, being a part of a larger tract  
 of  $75^{\text{as}}$   $50^{\text{ps}}$  & Allowance, originally surveyed in pursuance  
 of a Warrant granted to George Niess, dated the 19<sup>th</sup> day of  
 Dec<sup>r</sup> A. D. 1751.

Geo. Blank. C.S.

To J. M. Campbell Esq.  
Surveyor General.

IN TESTIMONY that the above is a copy of the original remaining on file in  
 the Department of Internal Affairs of Pennsylvania, made  
 conformably to an Act of Assembly approved the 16th day of  
 February, 1833, I have hereunto set my Hand and caused  
 the Seal of said Department to be affixed at Harrisburg,  
 this eighteenth day of May 1906

*Geo. B. [Signature]*  
 Secretary of Internal Affairs.